



Monday - Friday 10 to 6
Saturday 9 to 4
Sunday Closed

April 2009

Mark your calendar...

Want a great way to spend a Friday evening? Head to Dawn's Bead and Hide Away (220 E. Washington Street) Friday April 3rd. From 5 – 8p.m. you will get to enjoy the music of Jeffrey Morgan and Friends (FACF). This will be a coffee house event to benefit the Friends of the Animal Center Foundation. Snacks and coffee will be provided and a very special guest will be in attendance... Bokusa, an Animal Center graduate. You can't beat the price of a \$3 cover for a fun evening of music and benefiting FACF.

Time for the park...



With spring in the air it is time to head out to the off leash dog park. Don't forget to renew your dog park tags for 2009. The permit is \$25/year with a \$5 discount for spay/neuter and an additional \$5 discount for microchip. Your other options for purchasing tags are to print and fill out the permit application <http://www.jcdogpac.org/> and mail it to:

401 E. Washington Street, Iowa City IA, 52240

You can also go to the Robert A. Lee Recreation Center (220 S Gilbert St) or the Iowa City Animal Care and Adoption Center (4852 Sand Road SE). You need proof of rabies vaccination and spay/neuter and microchip, if applicable. Day passes, available for \$5 can be obtained at the park.

"Rita's Ranch," the second dog park on Scott Boulevard, is not officially open, but the 2009 permit tag will give your dog admission to both parks. Which ever park you use please remember a few of the basic rules...pick up after your dog, one dog at a time through the gates, be sure to give plenty of space at the gates. The off leash dog park is off leash. Having your dog on a leash within the park can be problematic for your dog and others. Leash aggression is a real issue. If this is a problem for you we have training books and can direct you to training assistance.

Yummy for the tummy...

Introducing HealthWise from the makers of Innova. We have expanded our line of Natura products to include this all life stages dog and cat food. A Value Priced Premium food, Healthwise formulas are based on the latest research in pet health to meet nutritional requirements. High-quality, highly-digestible proteins like chicken, chicken meal and lamb meal are the first ingredients. Also, oatmeal and wholegrains supply complex carbohydrates, essential vitamins and minerals. We have samples and information on Healthwise, check it out today. For more details on all of the Natura foods and treats you can check them out at www.naturapet.com



Feline heartworm disease...



© photo by Laurie Haag

While we think of heartworm disease as a dog concern, it is becoming more clear cats may also suffer dire consequences from heartworms. Recent research indicates that the incidence of feline heartworm infection rivals or surpasses that of FeLV or FIV infection. Your cat is not a natural host for the heartworm, which means the heartworm is not likely to complete its life cycle. The disease we see associated with heartworm infection in cats is caused by an inflammatory reaction rather than the physical presence of the worms themselves. Cats develop serious lung disease, complete with respiratory distress and chronic coughing. Feline heartworm disease is often misdiagnosed as feline asthma, as both of these diseases lead to the same kind of damage in the lungs. Vomiting, diarrhea, lethargy, anorexia, fainting spells,

blindness, seizures and sudden death may also occur with heartworm infection in cats.

In dogs, diagnosis of heartworm disease is not complicated; a simple blood test does the trick. Blood tests for cats are not so straight forward and often you get false negative readings. Treatment of heartworm disease in cats, with the products used for dogs is extremely dangerous and is considered a last resort. Prevention is the best defense since heartworm disease in cats is so difficult to identify. The lung disease that results is often severe and treatment options are limited. Heartworm prevention in cats is administered monthly throughout mosquito season, check with your veterinarian to see what is best for your cat. While you are at it, don't forget how important this is for dogs.

Balls, balls, balls...

Here is a great new toy for the dog that loves balls and more balls. This is one big soccer sized ball stuffed with tennis balls. Your dog will be busy removing all the balls and not be thinking about removing the stuffing from your couch. Loopies also makes some great cat toys.

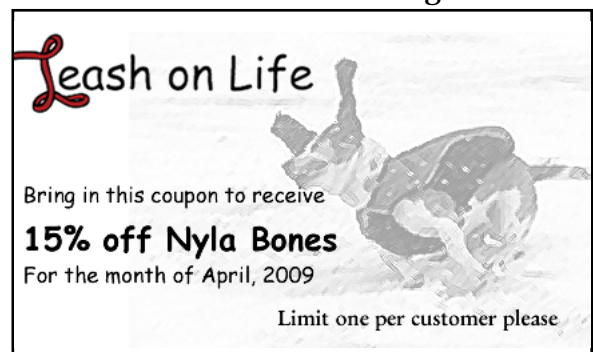


Adoptable dog of the Month, Speedy...



Speedy is a Coonhound mix puppy. Like all puppies he has lots of energy and wants to meet everyone. He is very friendly and outgoing. Like a good hound he likes to explore his environment and he likes attention. He will not be a small dog, likely to reach about 90 pounds as an adult. He's available to meet and greet at the Iowa City Adoption Center. Call them at (319) 356-5295 or visit www.icanimalcenter.org to learn more about any

of the dogs and cats at the Center.



432 Highway One West
(319) 354-4334
info@leashonlife.net
www.leashonlife.net

Julie Phye and Laurie Smith, *owners*
Laurie Haag, *photographer*
Kellie Bodeker, *graphics*
Connie Phye, *proofreader*